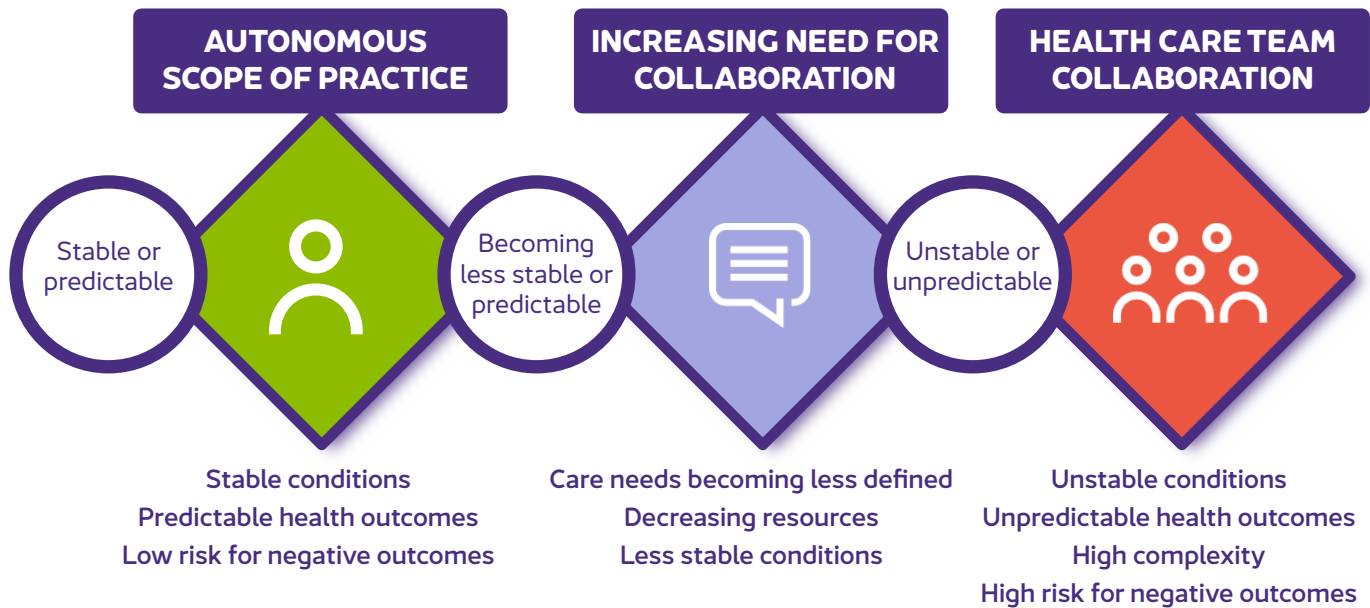


# NURSING IN A TEAM APPROACH

## Stable or Predictable

Stable or predictable reflects a client's status at a single point in time and may not reflect the dynamic nature of their status on a continuum from stable to complex.



### KEY CONCEPTS

#### RISK ASSESSMENT

A systematic process of evaluating the potential risks that may arise in performing an activity. See the **Risk Assessment tool**.

#### STABLE

No anticipated change in care needs on a day-to-day basis with a plan of care readily established and managed with activities that have predictable outcomes.

#### PREDICTABLE

The extent to which a client's health outcomes and future care needs can be anticipated.  
Context: Health care team, practice setting, resources.

#### CONTEXT

Health care team, practice setting, resources.

LPNs autonomously care for stable clients with less acute and/or complex care needs who have predictable responses and outcomes. The LPN working relationship with team members falls on a spectrum from working autonomously to working in partnership. LPNs seek out the health care team to jointly review and determine how the client care needs will be met when client care activities are outside LPN scope of practice or individual competencies.

The need for collaboration and consultation increases as a client's condition becomes less stable or predictable and care needs become more complex. Changes in client complexity requires more collaboration with team members to assess and set priorities and determine if additional resources are needed in escalation of care. Self-awareness and critical thinking are key aspects of autonomous practice.

BCCNM thanks CLPNM, CRNM and CRPNM for permission to adapt their Care Continuum figure from *Nursing in a Team Environment* (2020).

March 2022